



© CHANTELE MELZER | WWW.WILDVISUALS.CO.ZA

# GENERAL INFORMATION 2025/2026

## *Information about:*

- The Bhejane Base Camp Practical Camps
- Accommodation and Facilities Arrival and Travel Arrangements
- Some Health and Safety reminders
- Frequently Asked Questions
- Directions



R22 Hluhluwe | 082 604 3506 | [www.bhejanenaturetraining.com](http://www.bhejanenaturetraining.com)

Enquiries: [info@bhejanenaturetraining.com](mailto:info@bhejanenaturetraining.com)

## Welcome to Bhejane

The information below provides an overview of some of the practical aspects of attending one of the full time Bhejane courses. Please read it carefully and contact us should you have any further questions.

Please try to remember as you read the information that ***each Bhejane course is unique and will differ in some ways from other courses.*** We like to pride ourselves in the fact that our courses are dynamic and always evolving, resulting in up to date and relevant training opportunities for our students. Course schedules, guest lecturers and the camps used vary greatly from time to time as they are dependent on various factors such as drought or flood conditions, availability of guest speakers and group progress on course.

One of the factors that make Bhejane unique as a Field Guide Training school is our central location. While it's a very romantic idea to be living in a closed camp, in the middle of a big 5 reserve, the truth is that living, training and being with the same group of people in a confined space becomes quite taxing after a couple of weeks.

Bhejane's central location offers a unique advantage in field guide training. By not being confined to a single reserve, students can:

- Break up their wilderness experience into manageable chunks
- Can explore a wide variety of habitats, reserves and environments over the course of their training.
- Enjoy a more relaxed base camp environment, free from the pressures of living in a high-risk game reserve.
- Take advantage of self-guided activities like walks, runs, or bike trails in their free time.
- Engage with the local community through volunteering, events, and sports clubs.
- Experience a more collegiate atmosphere, promoting socialization and camaraderie.

This approach provides a well-rounded experience, allowing students to balance their field guide training with personal growth, community involvement, and relaxation. It's a refreshing alternative to the traditional, isolated training camp setup!

**We look forward to meeting you, and guiding you on your journey through Bhejane Territory.**



## Camps and Locations

We are situated in the Zululand/ Maputaland region of northern KwaZulu Natal, an area that is recognized as a global biodiversity hot-spot. It contains some of the oldest conservation areas in the whole of Africa. The diversity of the area is the result of varied habitats and biomes.

Surrounding reserves include the Greater Ukuwela Conservancy, Munyawana Conservancy(Phinda), and Mkuze Game Reserve, one of the most spectacular birding destinations in Southern Africa, and well known for its Fever Tree and Fig Forests. To the south, we have the Hluhluwe-Imfolozi Game Reserve, one of South Africa's flagship national parks, and home to the conservation legacy of the White and Black Rhino. We are on the border of the iSimangaliso Greater St. Lucia Wetlands Park – a marine and coastal reserve of international importance, declared a World Heritage Site.

The coast-line runs for over a 100km in this park, and is the venue for the Marine Guiding Component of the course. From the Loggerhead and Leatherback Turtle Nesting sites in the north to the Mangrove Swamps in the south, this represents a very unique and diverse ecosystem. Further north, is the Tembe Elephant Park and Ndumo Game Reserve, this provides a great venue for exploring the Sand Forest habitats of northern KZN. All of these areas are within one hour's traveling from the college.

## Arrival and Transport

Arrival at camp is always 1 day before the course starts. We request that students arrive by 17h00 on the day prior to course start date. Dinner will be served on arrival day to all students.

See the last page of this booklet for Directions.

## Personal Vehicles

Students are welcome to bring their own vehicles, but must please make sure to bring a cover as parking space is limited. Students will be allowed to keep vehicles at the Base Camp and for some practicals will be allowed to use personal transport if preferred.

We usually have a good number of students that have vehicles in camp, and are very happy to provide lifts to town for some weekend shopping to those students that do not have own transport. In the event that a student really needs something from town, and no lift is available we will be able to assist students with our weekly staff trips as well.

## Airports and Transfers

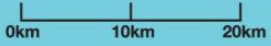
The closest airport to Bhejane is Richardsbay Airport. This is still 130km from the camp. Flights to Durban are usually cheaper and transfers can also be booked with Bhejane from Durban King Shaka Airport. There are a number of Car Rental Companies at Richardsbay, and Bhejane also offers a transfer service at an additional fee from the airport to the camp. To avoid driving at night, we request that you try to book flights that arrive no later than 16h00. If your flight arrives late, please book overnight accommodation close to the airport, and then we will collect you the following day.



### iSimangaliso Wetland Park

### Gobandlovu Base Camp

iSimangaliso Wetland Park	
Marsh	
Pans / Lakes	
Rivers	
Reefs	
Towns	
iSimangaliso Destinations	
Spot Height	
National Border	
Park Boundary	
Roads (National)	
Roads (Tarred)	
Roads (Gravel)	
Roads (Under Construction)	
4x4 Track (Permit Required)	
Wreck	
Lighthouse	
Airstrip	



SWAZILAND

MOZAMBIQUE

KwaZulu-Natal  
SOUTH AFRICA

INDIAN OCEAN

BIG BEND

PONTA DO OURO

Kosi Bay / Farazela

Mbabane 167km  
Kruger National Park 235km  
Lavumisa / Golela

Johannesburg 445km

Hluhluwe iMfolozi Park

KWAMBONAMBI Durban 210km



**Towns:** BIG BEND, PONTA DO OURO, KOSI BAY, KWANGWANASE, MSELANI, MBAZWANA, UBOMBO, MKUZE, BAYALA, NONGOMA, HLABISA, HLUHLUWE, KHULA, MTUBATUBA, KWAMBONAMBI.

**Reserves/Parks:** Ndumo Game Reserve, Tembe Elephant Park, Zululand Rhino Reserve, Hluhluwe iMfolozi Park, uPhongola Game Park.

**Water Bodies:** Kosi Bay Estuary, Lake Sibaya, Lake St Lucia, Lake Bhangazi North, Lake Bhangazi South, iMfolozi Swamps, Mkhuzi Swamps, Pongolapoort Dam, Hluhluwe Dam, uPhongola Dam.

**Geographical Features:** oKhombe Peak (474m), Maphelane (183m), Nyathikazi (159m), St Mary's Hill (138m), Mount Tabor (130m), Fani's Island, Bird Island, Nhlolzi Peninsula, Wilderness Area, Diepfont Canyon, Adams' Reef, Red Sands Reef, Leven Canyon, Deep Oscar, Shallow Oscar, Jolly Rubino, Cape St Lucia.

**Infrastructure:** R22, N2, R618, 4x4 tracks, airstrips, lighthouses, wrecks.

## ACCOMMODATION - Gobandlovu Base Camp

**Gobandlovu** has got several camps, consisting of either Safari Tents, or Wooden Huts, with shared ablution facilities. Students on the 1 and 3 Year programmes are usually accommodated in Ingwe & Nkonkoni Camps (consisting of either shared or individual safari tents).

Each student is supplied with a single bed, shelf for books, bedside table or shelf, desk and wardrobe.



### Wooden Huts

Are shared by 2 students if on a short course, or 1 student on the longer courses. The huts are equipped with either a Wardrobe, or Open shelves, bed, bedside table and wall-mounted shelf for books and other equipment. Only single occupancy huts are supplied with an additional desk.

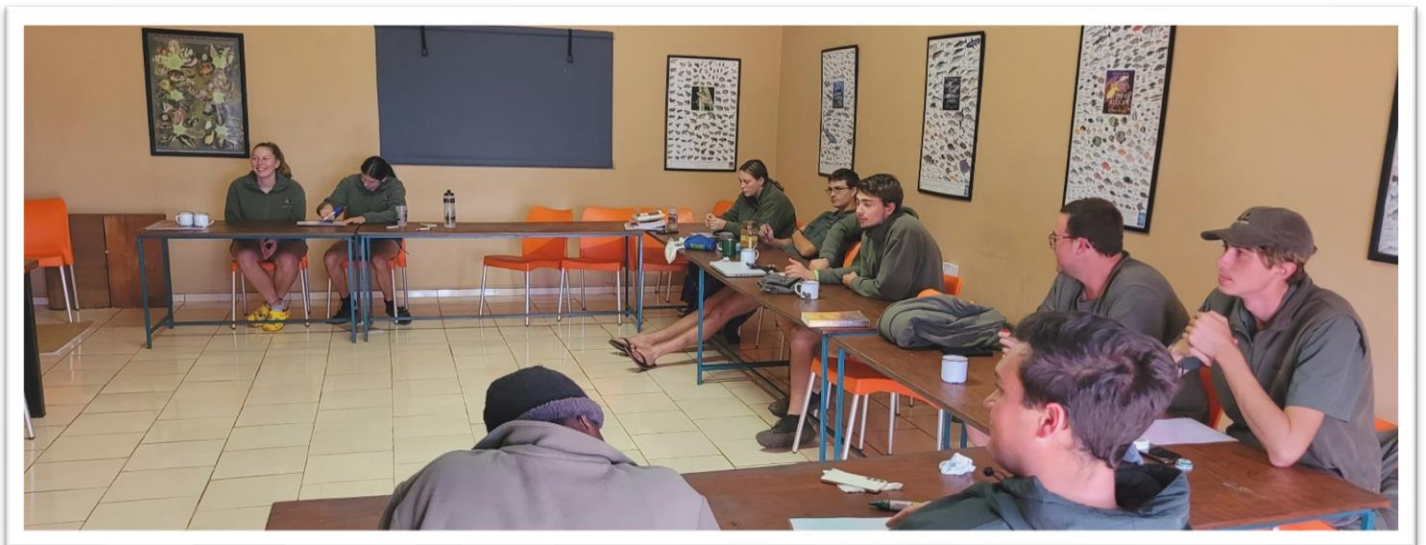
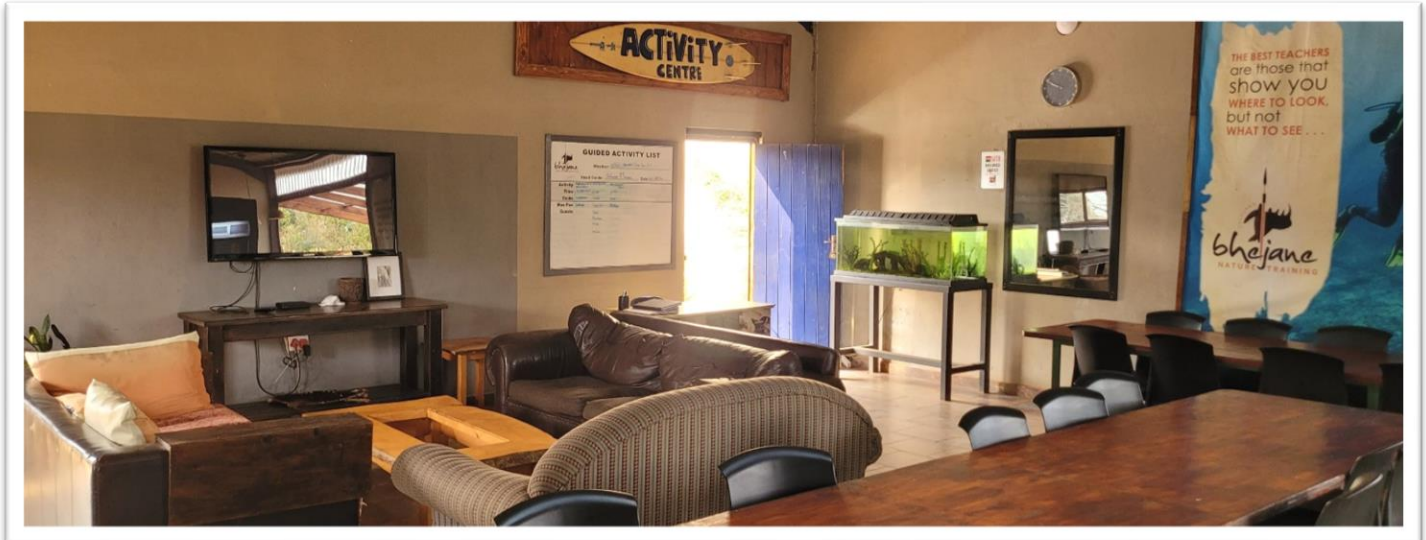


**Disclaimer:** The information given above is accurate at the time of writing. Factors beyond the control of Bhejane Nature Training, such as regulatory changes, may cause the exact content, duration or venue of certain modules to change. In the event of any such change, all reasonable measures will be taken to minimize inconvenience to students.



## FACILITIES - Gobandlovu Base Camp

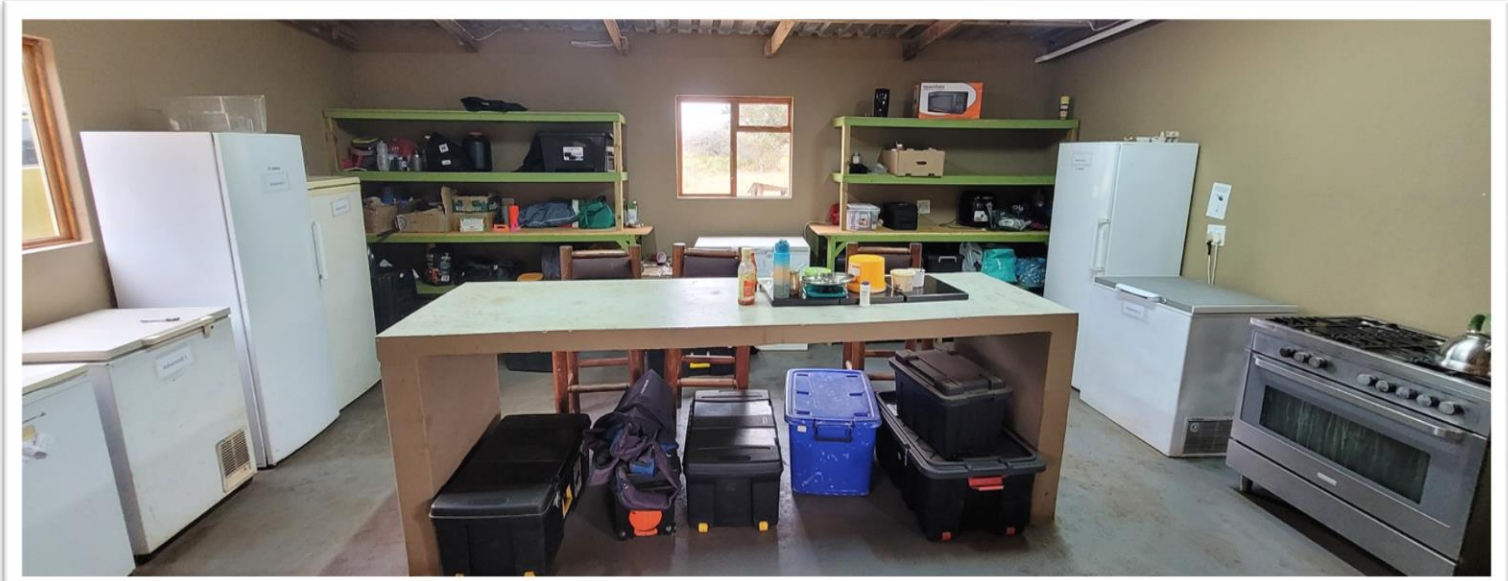
The central hub of Gobandlovu camp has got a little tuck shop called Khoffee Khaya, lounge with DSTV for weekend sports games, documentaries and movie nights. There is also a basic student Gym, library, Bush Sports Field for the occasional game of Touch Rugby, and Student Kitchen with student braai facilities for weekends and off days. Pictured below is the lounge, lecture room and central area.



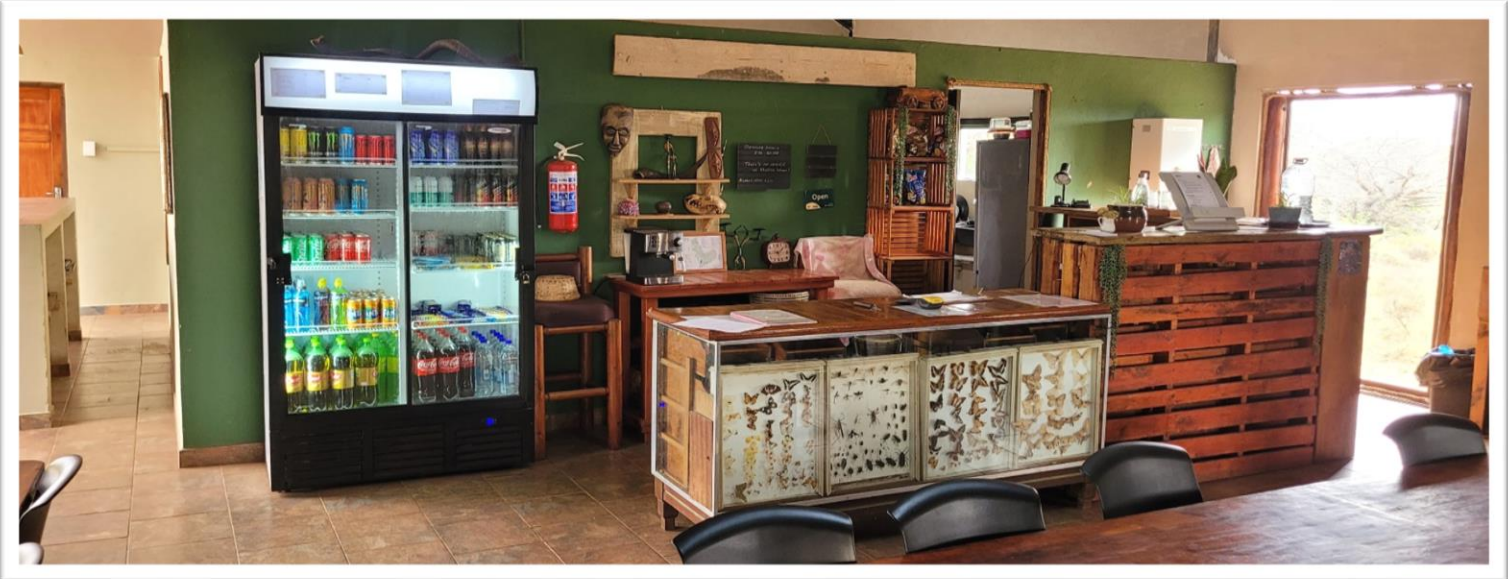
**Disclaimer:** The information given above is accurate at the time of writing. Factors beyond the control of Bhejane Nature Training, such as regulatory changes, may cause the exact content, duration or venue of certain modules to change. In the event of any such change, all reasonable measures will be taken to minimize inconvenience to students.



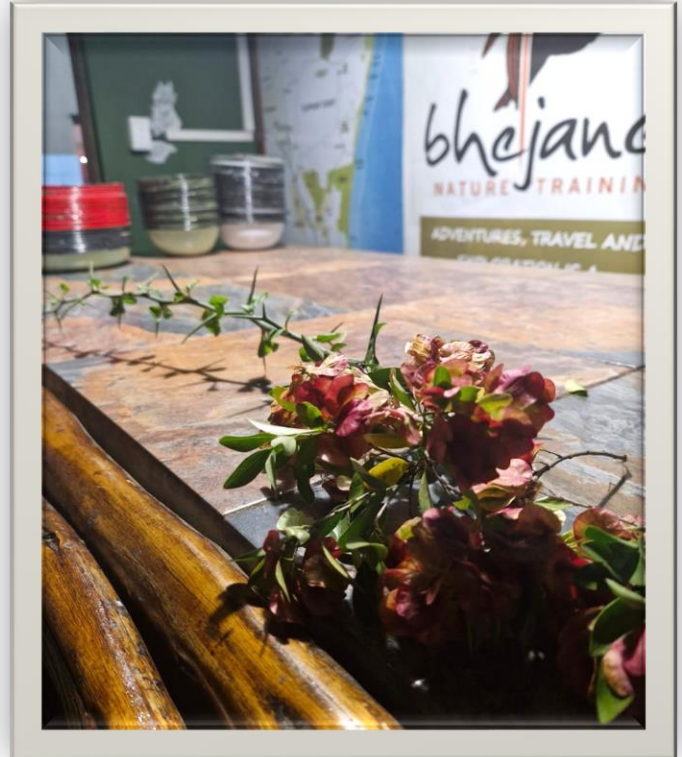
## Student Kitchen, Khoffee Khaya and Student Gym



The student kitchen is supplied with a gas oven, microwave, fridges and freezers, shelves for dry storage, and general appliances like kettle, toaster. Basic cooking utensils are supplied. Students have a nice braai area to use over weekends as well.



## MEALS- Gobandlovu Base Camp



Students are provided with three meals a day while on course. This is usually from Sunday evening, through to Friday lunch. Sundays are traditionally Potjiekos days, and students can volunteer to assist with the meal prep for this. All other meals are prepared by the Bhejane Kitchen team. We make an effort to accommodate most dietary requirements, but do not offer Vegan options. If you have a larger than most appetite, or have any very specific dietary requirements, we recommend that you bring some additional supplies that can be stored in the student Kitchen.

## Practical Excursions

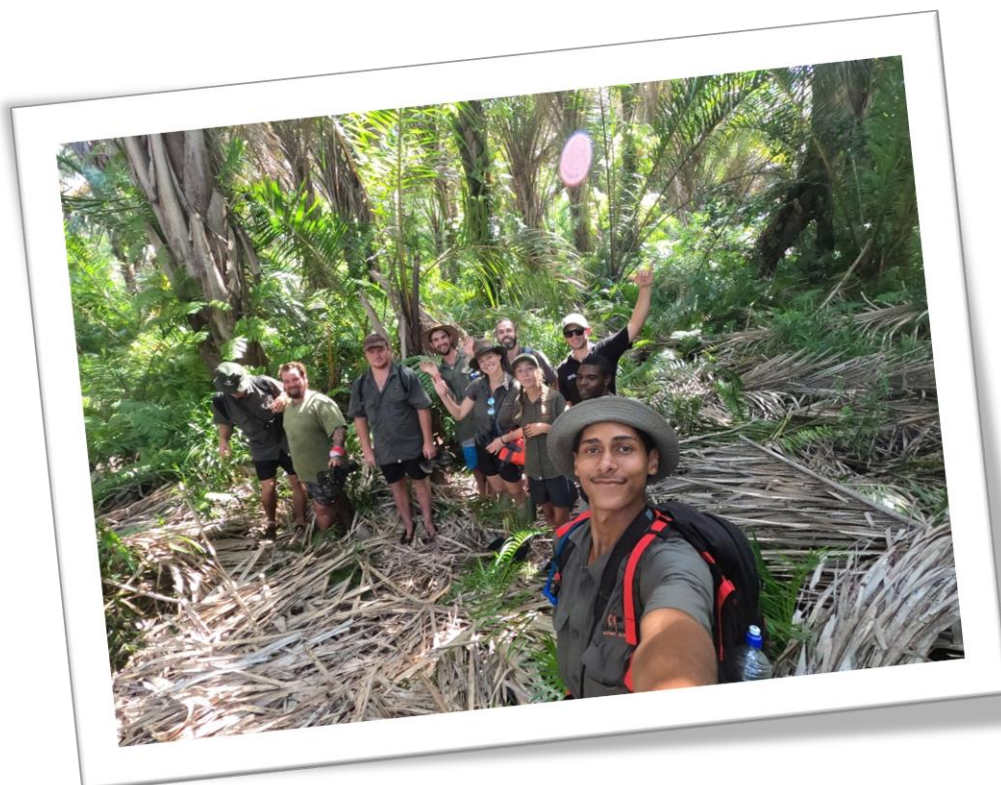
The Gobandlovu Base camp is used mainly for orientation, administration, for lectures, and theory assessments. The camp is well stocked with a library. It is also a good opportunity while at Base camp get some laundry done, and stock up on supplies and snacks. WIFI Internet access is available in the central area and lecture rooms.

Lecture days at Base Camp are still very practical, and will usually include morning, day or evening practical's on the reserve or exploring the surrounding area. Kuleni is not a dangerous game reserve, and therefore allows for a lot of walking and self-exploration. It is a great venue for the reptiles and amphibians, birding and insects. The Unique Sand Forest Habitat provides for a wealth of butterfly, spiders and other insects.

### What are the facilities and accommodation like at Practical Camps?

Practical Camps are much more rustic than the Base Camp, below is an overview of available facilities:

<i>Facilities</i>	<i>Trails Camps</i>	<i>Kosi Bay</i>	<i>Sodwana</i>
Internet/ Cell Phone	No - limited cell phone reception	No	Yes
Warm Water	IF available, Fire Driven system (Donkey) or Gas	Yes	Yes
Accommodation	Dome Tents	Dome Tents	Dome Tents
Electricity	No - limited solar electricity	No	Yes
Beds or Bedrolls	Bed Rolls	Beds	Beds



## Clothing, Linen and Laundry

**Uniform:** Students will be issued with uniform as per their specific course. We encourage students to bring extra neutral coloured clothing for the start of the course- we often run into long delays with uniform suppliers and although we make every effort to minimize this, students may need to wear own clothing for the first 2 weeks of the course. The Code of Conduct will be sent to all students prior to arrival. Please read the code of conduct and terms and conditions. It is important that students follow this code and are dressed appropriately at all times. Hygiene, grooming and general appearance are assessed during the duration of the course on a continuous basis. Bhejane Uniform is Olive Green.

### What linen and bedding do I need to bring?

You need to bring bedding for camp as well as a sleeping bag for traveling ( you can also use your sleeping bag in camp, if you want to, but we recommend that you bring as extra items a fitted sheet and a flat sheet for warm nights when it is too hot to sleep under your sleeping bag. All bedding should be for a standard single bed. Please mark all your linen and bedding.

### What type of extra clothing will I need?

Zululand can get very hot and humid in summer, while the winters are very mild. Average summer temperatures range from 22-30 (degrees Celsius , although it is not unusual to have a few days peaking into the 40's. Humidity is usually quite high over this part of year, however we are in a drought at the moment and humidity has been much lower than usual. You can expect some Rain in Feb, but much less in March and April. Our rainy season is mostly Nov – Feb. Average Winter temperatures range from 13-24 (degrees Celsius), however temperatures at the Zululand Bush Camps, which are at higher altitude drop much lower than this (down to 5-0 degrees Celsius), so evenings and mornings Zululand Bush Camps can get quite chilly. You need very little extra warm clothing, but one good warm jacket and some long pants will come in handy, especially if you are on a longer course and will be visiting the Bush Camp in Winter.

### Laundry Facilities:

Bhejane provides a Laundry Service at an additional fee from the Base Camp, however there are also hand washing and machine facilities available for students to use if doing own laundry. All students are encouraged to please mark all personal items

**Disclaimer:** The information given above is accurate at the time of writing. Factors beyond the control of Bhejane Nature Training, such as regulatory changes, may cause the exact content, duration or venue of certain modules to change. In the event of any such change, all reasonable measures will be taken to minimize inconvenience to students.



# Hluhluwe Town

The town of Hluhluwe is 20km from Gobandlovu Camp, and students have time on weekends or other off days to go to town. Students are usually able to get a lift with other students. It is good practice to contribute some fuel money, so remember to budget for this.

**General Practitioners:** Dr. Cohn 035 562 0016 / Dr Erasmus 035 562 0162

**Banks** - FNB and Capitec Bank. Nedbank Kiosk inside Boxer Supermarket.

**Supermarkets** - The town has got a small Spar, Shoprite, Pep Stores, Wimpy, KFC and Steers/Debonairs.

**Restaurants** - *Ngweni Brewery* is a popular option for meals in town, it has also got the famous Ilala Weavers Curio Shop. *Rafiki's at Zulu Croc* is about 5km from camp and offers light meals, and a put-put course in addition to the Zulu Croc Reptile Display.

*Delishh* is a new restaurant at the Kuleni Game Park Gate, and within walking distance from the camp (if walking through the inside of the park). It has got a Padstal shop, and offers lovely meals as treat over weekends or off days.

**The Pharmacy** can be contacted for prescription medicines. 035 562 0028

## Sharing and Student Profiles

**What is the typical age, nationality and sex ratio of the students on course?**

The Bhejane student population is mostly South African, with international students joining occasionally for the shorter 3 month programmes. The majority of international students at Bhejane are European, with smaller percentages being American, and Asian. Although the numbers above represent average ages, all groups to date have also had older students between the ages of 28 - 50.

Course	Average Group Size	Average Age	SA Students %	International Students %	Male/Female Ratio
NQF 2 Field Guide/ Combined Course	8-10	24-28	60	40	50% Female
1 Year CDP	8 - 10	21-28	90	10	50 % Female
Advanced Course	14 -18	19-22	90	10	50% Female



## Health and Safety

### Malaria and Tick bite fever

The Isimangaliso Wetlands Park and its surrounding areas are regarded as low to intermediate risk areas for malaria. According to local doctors they treat very few cases of malaria annually, and the ones that they do treat, are for people that have travelled further north. Malaria is therefore not a big concern, but it is still wise to take the necessary precautions.

Use insect repellent and cover up at night. Mosquitoes are generally not a problem during winter months (May - August), but can be very bothersome during the rainy summer months. You can bring a mosquito net for comfortable sleeping if you wish. Kosi Bay, one of our camps for Marine Guide Training, is regarded as an intermediate risk area for malaria. Please take the necessary precautions during this time, as advised by your travel clinic or health care professionals.

Pepper Ticks –these small pin sized ticks are carriers of the parasite that is responsible for Tick Bite Fever in humans. As with mosquitoes, your best course of action is to wear long pants when walking and to regularly spray your clothes with insect repellent. Symptoms of Tick Bite Fever include headaches, hot and cold flushes, needles and pins, and mild fever. Please let us know as soon as possible if you have any of these symptoms. In most cases, Tick Bite Fever is not too serious, and you will get better within a couple of days.

### General Safety

We advise the same general safety precautions as recommended everywhere in South Africa. Our camps are safe, with restricted access and security patrols on the reserve at night. We always have a Duty Manager on call to assist in case of emergency.



# Frequently Asked Questions

## Can I exercise anywhere?

You are free to go for a run or a walk on and around the base camp property. We recommend running or walking with a fellow student if leaving the property. Students can arrange for access to the Private School Swimming pool, which is about 8km from camp or join the local Rugby Club if on the long term courses. There are various Mountain Bike Races held in the area every year. We cannot guarantee that course schedules will allow participation, it is possible from time to time.

## Must I leave the camp on weekends or off days?

No, you are welcome to stay in camp, but must prepare your own meals during weekends and off days.

## What do most students do over weekends?

Most students do stay in camp, but often travel together for day trips to the beach, to Richardsbay for Shopping or visit surrounding parks and reserves. If you are on practical, weekends are not off, and you will not be allowed to leave from practical camps. The information above is only applicable to time spent at Base Camp.

## What will be my biggest challenges?

In our experience students struggle most with **community living - it is important to prepare yourself for the idea of sharing your space with other students**. There are various measures in place to aid your comfort and well-being, however dealing with the same people over a long period can be emotionally draining if you are not prepared for it. At the same time, however, rest assured that groups generally bond very well - you are after all like-minded people with similar interests, and we find that groups tend to support each other very well and become life-long friends during and after the course.

**Living with camp and reserve rules:** There are various camp and reserve rules that you will be expected to follow and respect. These include times when we expect all students to be quiet, gate locking times and rules regarding when you are allowed to leave the property.

We encourage you to simply be ready for and accept these rules - these are industry standard rules, not Bhejane specific rules, and as with the challenge above, you will find that where-ever you end up working, this will become your life. It is a small sacrifice to make for the privilege of living and working in such beautiful and awe-inspiring natural areas - a privilege available to fewer of us every day. Embrace the opportunity and come with a positive attitude - moaning and nit-picking about camp rules that inconvenience you can really spoil your course experience. It is however entirely in your hands how you choose to experience this.



## Coming to grips with African Time, Load Shedding and the realities of Bush Life.

Even though our base camp is in a fairly central location, we are still part of a rural community and we do not at the drop of a hat have access to products and services. Internet signal comes and goes, maintenance problems may seem to take long to fix even though you perceive it to be small problem, water supply and other municipal services are not always reliable and load shedding (scheduled electricity interruptions) are standard events. We cannot always get hold of the variety of fruit and vegetables you imagine you should be having, and on top of all of that, you will have to deal with the heat, and mosquitoes!

All of this sounds much worse than it really is, rest assured that if you come with the right attitude and expectation, these are all challenges that you will overcome very quickly. The orientation week of your course is also designed to help you prepare for some of these. With a little personal planning and organization, you may even start to appreciate these challenges for the lessons and life skills they bring!

## Social life and Leisure time

We have a small pub at base camp where we sell some beers, ciders and wines. Students are allowed to purchase limited quantities of alcohol, and will not be allowed to keep any alcohol of their own on the property. Gate times over weekends are a little later (9pm) than during the week and students that do choose to go out will be expected to back in time.

## Can we come to view the camp?

Yes, you are welcome to come for a site visit to see the camp, or meet with us if you have any further questions. You can just contact our camp office to book an appointment and suitable viewing time.



# Bhejane Nature Training Full time Courses What to Bring List

Please go over the list of items below and let us know if you have any questions. You do NOT need to go out and buy hundreds of items! You will be able to get along fine with the most basic items, but we have made the list as comprehensive as possible simply to assist you with decision making. The students will often get a good idea of equipment once here, and it is wise to only then spend more on quality items. Buy / borrow what you can, to start, the rest you can buy with time if needed and with some experience on what equipment you prefer.

## Books and Stationery

Field Guide Reference Books (See Booklist)

- Notepads (Bring bigger ones for study and revision and at least 2 small pocket-sized notepads that can be taken on field excursions.)
- It is useful to have a few coloured pens/pencils for posters and projects.
- Dictionary – can be useful if you are not an English first language speaker. There are many good Dictionary Apps available for this.
- Course documents (Please see registration form) you will need to have an original ID or Passport so that we can make certified copies throughout the year as needed for various qualification bodies.

## Electronics:

- Laptop – this is not required but highly recommended if available.  
Students are encouraged to work electronically when possible and will be doing several presentations for which access to a laptop is preferable.
- Phone- we recommend a waterproof kit for your phone especially for Marine Guiding modules and activities. (A Ziplog bag works just as well! Bring a variety of sizes. it is good for books as well when going out on a rainy day or exploring Rocky Shores!)
- Solar Charger – all central camp areas have electricity but not all huts / tents have electricity. Having access to your own solar device charger is useful for charging devices in your hut/ tent. If you don't have one, you will still be able to charge everything in the central student area.
- Lead / Multiplug – for working with computers / charging phones in communal areas. (Well-marked - pls use permanent marker to mark you adaptors or leads.)



# Bhejane Nature Training Full time Courses What to Bring List

## CAMP AND GENERAL

- Pocket money for tuck shop.
- Hats / Caps – you will be given a Bhejane Cap that may be worn on course. Other hats you may wear include any wide brimmed bush hats in neutral colours.
- Good hiking boots (any shoe that are comfortable to walk long distances in will work. Trails terrain is very mountainous in areas however, so ankle support is advised.)
- Rocky Shore Shoes / Aqua Socks (Mr Price sells them). If you have Diving Booties they work well also. (no open heeled flip flops will be allowed for rocky shores)
- Comfortable shoes for around camp.
- Swimwear
- Marine Shorts - must be black or dark gray. Can be board shorts or tight-fitting cycle shorts.
- Rain jacket / Poncho
- Comfortable Clothes for around camp. We also advise that you bring extra neutrally coloured bush clothes if you have this available.
- Personal Toiletries
- Any medications you may need.
- Tick and insect repellent
- Washing powder and pegs for laundry days.
- Laundry Basket / Bag
- Iron if preferred. We do have an iron that can be signed out but it is not left in the laundry area. Some students prefer to just bring their own for convenience.
- Laundry Pen to mark your items of clothing and uniform (Available at Waltons)
- Car Cover

## KITCHEN

- Kitchen Lockable Storage Container for your dry items to be stored and kept in the student kitchen. A standard Big Jim type box will be fine.
- Cool-bag for the fridge (we recommend a foldable zipped bag as sold at PicknPay, Checkers or Woolworths check out counters) to keep your items private in the student fridge.
- Coffee Mug (one for camp and one for travelling),
- Camping Cutlery set and Plate
- Lunch box (Very NB!)



# Bhejane Nature Training Full time Courses What to Bring List

## EQUIPMENT:

- Binoculars (See below) If you have access to the binoculars of a family members, this is fine for starting out.
- Torches – it is best to have both a handheld torch and a headlamp. Make sure have spare batteries and have marked your torches.

*Useful tip:* Get a belt-clip to attach your torch to your body when not in use.

- Pocket knife and /or Multitool (Not essential but a useful item for guiding in any environment.)
- Trails Knife (optional) if you want to bring a knife for trails, we advise an open sheath (Fixed blade sheath knife) with a maximum length of 28cm including blade and grip.
- Back-pack with Water bottle or water bladder.
- A back-pack with capacity of 28liters is recommended. The water bladder should be able to hold at least 2.5-3 Litres. Make sure the bag you choose fits you comfortably and has enough support – extra support around the waist is good.
- Belt- a good leather or other utility belt is needed for firearm training and walking trails.
- Mask, Snorkel and Fins (Marine is never done first on the course- wait until you are here to get advice on what to get if you don't already have this. We also have a few sets for rental available.)
- Swimming Cap (for use at local pool when we do fitness tests)
- Camping Chair (Optional)
- Solar light for Tent (Optional)

## ROOMING, BEDDING AND LINEN:

- Sleeping bag - For camping and practical's. The Zululand Bush camp can get quite cold in winter, if buying new sleeping bags, look for a -5 bag.
- Towels
- If you are international, please speak to the Registrations office about help with linen - we are happy to help you if you cannot travel with linen. Sleeping bags however are NB pls try to bring that
- Your bed at base camp is a normal sized single bed. We recommend a fitted sheet, duvet or similar cover and extra blanket, as well as pillow.
- Although a kit is provided to be shared by each camp some students prefer their own cleaning kit (ie Broom and Scoop)
- Any bedside or doormats you would like to use.



# Bhejane Nature Training Full time Courses What to Bring List

## Choosing the right Binoculars

Binoculars are possibly the most crucial piece of equipment a nature guide needs. Choosing the right pair of binoculars is very important. Good quality binoculars can be very expensive, so it is important to understand what the most important features are to help you make the right decision.

Bhejane recommends Roof-prism binoculars, with a magnification specifications as explained below.

Once you have found the pair with the correct magnification that is within your budget, you should also consider some practical attributes such as:

- How heavy are they? Will you be able to comfortably carry them around your neck all day?
- How big are they? Very large and bulky binoculars should not be considered, rather opt for something that is nice and compact.

To avoid binoculars that are too big and heavy, try to restrict your lens width to a range between 30-50mm.

- Magnification – minimum recommend magnification is 8, maximum is 10.
- The ideal binoculars therefore would have a lens width and magnification specification of 8x40mm or 10x40mm.
- How is the image quality? You can test this in store. Pick up the binoculars and look out over an area stretching for at least 100m. Is the image sharp across the entire field of view? Are colours true to life?
- Are the eye-pieces adjustable? Eye pieces should be able to adjust individually.

## *Recommended brands and price ranges:*

BRAND	LENS WIDTH AND MAGNIFICATION	PRICE RANGE
Bushnell	10x42	From R1500
Pentax	8X40	From R2000
Leupold	8x42	From R2250
Nikon Monarch	8x42	From R2600
Leica	8x42, or 10x 42	From R16 000
Swarovski	8x42	From R21 000
Vortex (Can be bought from Bhejane)	8 x 42 or 10 x 42	From R6800

## Directions and Contact Details

### From Johannesburg:

Travel to Pongola. Take the N2 through Pongola and continue straight towards Mkuze. Carry on passed Mkuze toward Hluhluwe. Take the Hluhluwe/Sodwana turn-off from the N2. Turn left towards the town at the top of the turn-off. Drive straight through Hluhluwe – you will pass three traffic circles. At the fourth traffic circle, you turn left. There will also be a sign indicating the R22 and Sodwana Bay. Take this left turn and continue until you get to the stop at the railroad track on your right hand side. Drive over the rail-road track and continue down this road for about 20km. After 20km you will go around a bend in the road and see a small brown sign board for the D554 on your right. (If you pass Amorello Golf Lodge you have gone to far). Turn left at the D554 sign and follow the signs for Bhejane Nature Training. There will be someone to open the gate, alternatively just give us a call once you are there so we can send someone to open for you.

### From Durban:

Travel on the N2 towards Hluhluwe. Take the Hluhluwe/Sodwana turn-off from the N2. Turn right towards the town at the top of the turn-off. Drive straight through Hluhluwe – you will pass four traffic circles. At the fourth traffic circle, you turn left. There will also be a sign indicating the R22 and Sodwana Bay. Take this left turn and continue until you get to the stop at the railroad track on your right hand side. Drive over the rail-road track and continue down this road for about 20km. After 20km you will go around a bend in the road and see a small brown sign board for the D554 on your right. (If you pass Amorello Golf Lodge you have gone to far). Turn left at the D554 Sign. There will be someone to open the gate, alternatively just give us a call once you are there so we can send someone to open for you.

Or just click on the link to find us on Google Maps [Bhejane Gobandlovu Base Camp](#)

### Contact Details:

Note on phone-calls- please understand that our signal at all camps, including our office at the base camp is not always 100%. If you cannot get hold of us by phone, please sms. Whatsapp , or e-mail and will get back to you.

**071 423 8804 (Registrations Office Whatsapp)**  
**082 604 3506 (Admin & Enquiries Office Whatsapp)**

[registrations@bhejanenaturetraining.com](mailto:registrations@bhejanenaturetraining.com)

[info@bhejanenaturetraining.com](mailto:info@bhejanenaturetraining.com)

*We look forward to welcoming you to the Bhejane Tribe!*